



<b>Project:</b>	<b>Type:</b>
<b>Prepared By:</b>	<b>Date:</b>

## Technical Specifications

### Sensor Characteristics

#### Lead Time:

3 weeks expedited shipping. 6 weeks standard shipping.

#### Construction

#### Arm:

Wall mount 20" high, 19" from wall.

#### Diameter:

Diameter of the tube is 1".

#### Mounting:

The wall plate does not mount to a junction box but directly to the mounting surface with the proper hardware for the surface.

#### Component Only:

This is a component for ordering LED Goosenecks. Not a complete fixture without Shade and Head.

#### Construction:

Die cast aluminum

#### Finish:

Our environmentally friendly polyester powder coatings are formulated for high-durability and long-lasting color, and contains no VOC or toxic heavy metals. Offers significantly improved gloss retention and resistance to color change.

#### Other

#### Threads:

1/2" NPS at the fixture Side.

#### Country of Origin:

Designed by RAB in New Jersey and assembled in Taiwan.

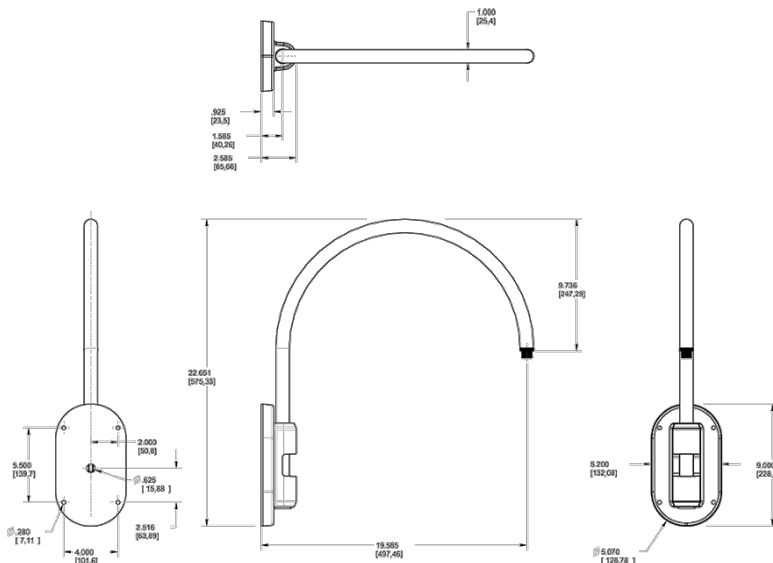
#### Trade Agreements Act Compliant:

This product is a product of Taiwan and a "designated country" end product that complies with the Trade Agreements Act.

#### GSA Schedule:

Suitable in accordance with FAR Subpart 25.4.

## Dimensions



## Ordering Matrix

Family	Style	Finish
GOOSE	4	S
	1 = Arm Style 1 2 = Arm Style 2 3 = Arm Style 3 4 = Arm Style 4 5 = Arm Style 5	<b>B</b> = Black <b>W</b> = White <b>A</b> = Bronze <b>S</b> = Silver <b>G</b> = Hunter Green <b>YL</b> = Yellow <b>LB</b> = Light Blue <b>BL</b> = Royal Blue <b>BWN</b> = Brown <b>I</b> = Ivory <b>R</b> = Red