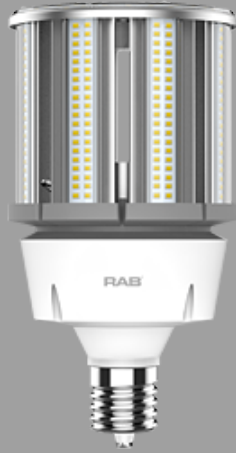


**Project:**

**Type:**

**Prepared By:**

**Date:**



UPC: 19813749242



### Features and Benefits

- HID REPLACEMENT - Replace conventional HID lamps
- BALLAST BYPASS - Internal driver eliminates the need for external driver or ballast
- COMPACT DESIGN - Allows the lamp to fit in most fixtures
- HEAT DISSIPATION - Thermal technology extends lifespan
- WATER & DUST RESISTANT - Ideal for outdoor fixtures
- ENCLOSED FIXTURE RATED - May be used in enclosed and open fixtures
- INSTANT ON - No warmup time required, full brightness instantly
- SURGE PROTECTION - Includes 4kV surge protection

### Technical Specifications

Product Type	HID
Bulb Shape	Post Top
Wattage	80W
Wattage Equivalency	320W HID
Typical Lumen Output	10800
Efficacy	135 lm/W
Color Temperature	5000K Daylight
CRI	80
Base Type	EX39
L70 Lifespan	50,000 hours
Operating Temperature	-30°C - 60°C
Dimmable	No
Beam Angle	360°
Warranty	5-Year, No-Compromise Warranty
Installation Type	Type B, Ballast Bypass
Installation Orientation	For Vertical Installation Only
For Use in Emergency Fixtures	No
For Use Outdoors in Open Fixtures	Yes

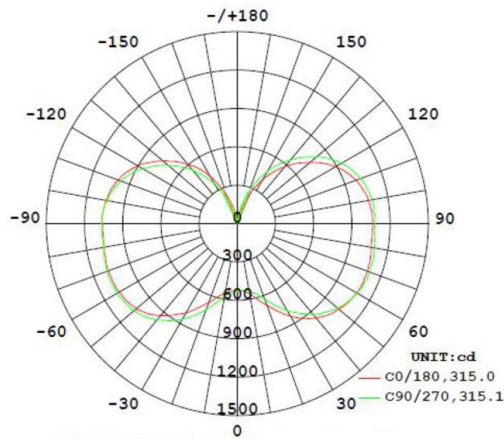
### Electrical Characteristics

Input Voltage	100-277V
Power Factor	>0.9
Operating Frequency	50 / 60 Hz
Input Current @ 120V	0.89mA
Flicker	<30%
THDi	<20%

### Listings

UL Listed	Yes
UL Classified	Yes
DLC Listed	This product is on the Design Lights Consortium (DLC) Qualified Products List and is eligible for rebates from DLC Member Utilities.
DLC Model Number	HID-80-EX39-850-BYP-PT
DLC Product Code	PL4A1Y8QW89L
CEC Status	Lawful for sale in California

## Light Distribution



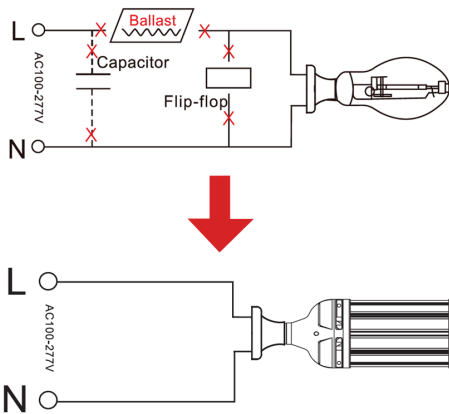
## Minimum Compartment Size

Length x Width x Height [mm]	Lamp Quantity
9.8 x 9.8 x 9.1	1

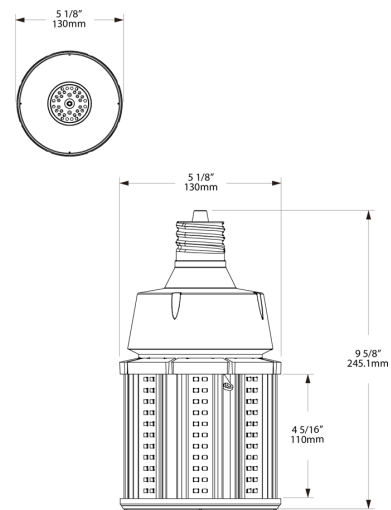
## Case and Pallet Dimensions

	QTY	LENGTH	WIDTH	HEIGHT
CASE	6	20.7	14.2	14
PALLET	18	30.3	43.3	46.7

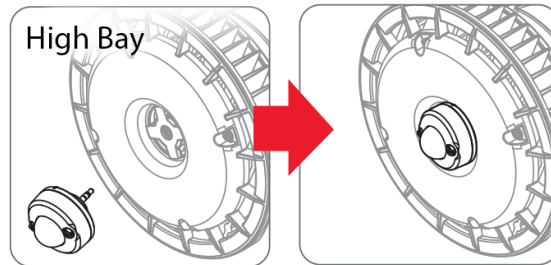
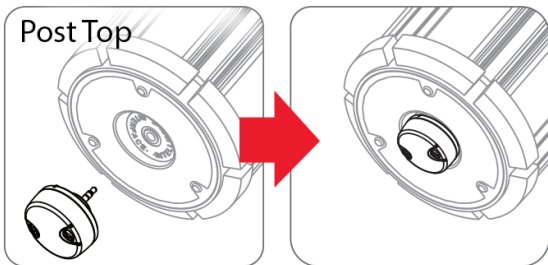
## Wiring Diagram



## Dimension



## Sensor Installation



### Compatible with:

HID-80-EX39-8xx-BYP-PT  
 HID-100-EX39-8xx-BYP-PT  
 HID-120-EX39-8xx-BYP-PT

### Compatible with:

HID-60-V-EX39-8xx-BYP-HB  
 HID-80-V-EX39-8xx-BYP-HB  
 HID-115-V-EX39-8xx-BYP-HB