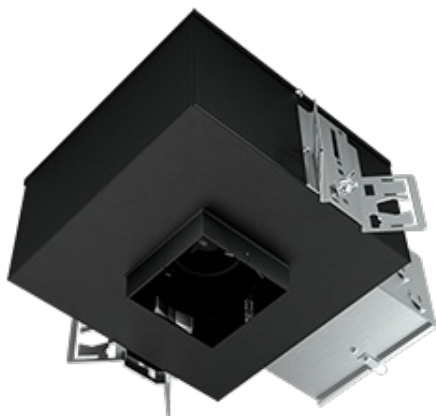


NDICLED3S-25LYY-TL



3-inch new construction downlight with a patented 3-in-1 design that supports a variety of options for a broad range of applications.

Color: N/A

Weight: 10.4 lbs

Project:

Type:

Prepared By:

Date:

Driver Info

| | |
|--------------|------------------|
| Type: | Constant Current |
| 120V: | 0.24A |
| 208V: | 0.15A |
| 240V: | 0.13A |
| 277V: | 0.11A |
| Input Watts: | 26W |
| Efficiency: | 96% |

LED Info

| | |
|-----------------|------------|
| Watts: | 25W |
| Color Temp: | 2700K |
| Color Accuracy: | 80 CRI |
| L70 Lifespan: | 100,000 |
| Lumens: | 763 - 1604 |
| Efficacy: | 29 LPW |

Technical Specifications

Listings

UL Listing:

Suitable for wet locations in a covered ceiling (adjustable models suitable for damp locations).

Optical

Photometrics:

Photometrics are based on prorated reports. Contact the RAB Lighting Design department for the most up-to-date data.

Optics:

High-efficiency TIR optics. Available as a downlight (80° or 50° beam), adjustable (40° or 20° beam with 40° vertical adjustment and 360° rotation), or a wall washer.

Construction

IC Rating:

Suitable for direct contact with insulation

Trim:

Accepts trimless cones (spackle flange included)

Housing Component:

This component must be ordered with New Construction Round Trim Module in order to make a complete fixture.

Cold Weather Starting:

Minimum starting temperature is -40° F (-40° C)

Maximum Ambient Temperature:

Suitable for use in 104° F (40°C) ambient temperatures

Housing:

Cold-rolled steel and aluminum

Installation:

Nailer bar and butterfly brackets included; C-channels optional for acoustic tiles

Green Technology:

Mercury and UV free. RoHS compliant components.

LED Characteristics

Lifespan:

100,000-hour LED lifespan based on IES LM-80 results and TM-21 calculations.

Color Consistency:

2-step u'-v' Circle Tolerance, previously referred to as 2-step MacAdam Ellipse, achieves consistent fixture-to-fixture color (ANSI standard C78.377.2015)

Electrical

Driver:

Constant Current, Class 2, 120-277V, 50/60Hz, 120V: 0.24A, 208V: 0.15A, 240V: 0.13A, 277V: 0.11A

Dimming Driver:

Universal dimming driver supports TRIAC, ELV and 0-10V.

Surge Protection:

2kV

Performance:

80° white: 1416 lumens, 54 lm/W
 50° white: 1477 lumens, 57 lm/W
 40°A white: 1580 lumens, 61 lm/W
 20°A white: 1546 lumens, 59 lm/W
 WW white: 1031 lumens, 40 lm/W

80° matte: 1423 lumens, 54 lm/W
 50° matte: 1480 lumens, 57 lm/W
 40°A matte: 1604 lumens, 62 lm/W
 20°A matte: 1573 lumens, 60 lm/W
 WW matte: 1067 lumens, 41 lm/W

80° black: 1188 lumens, 45 lm/W
 50° black: 1375 lumens, 53 lm/W
 40°A black: 1511 lumens, 58 lm/W
 20° black: 1462 lumens, 56 lm/W
 WW black: 763 lumens, 29 lm/W

Other

Aperture Size:

3" Rough-In

Special Order:

Available in battery backup option by special request. Contact RAB customer service to order.

Warranty:

RAB warrants that our LED products will be free from defects in materials and workmanship for a period of five (5) years from the date of delivery to the end user, including coverage of light output, color stability, driver performance and fixture finish.

Country of Origin:

Designed by RAB in New Jersey and assembled in the USA by RAB's IBEW Local 3 workers.

Buy American Act Compliant:

This product is a COTS item manufactured in the United States, and is compliant with the Buy American Act.

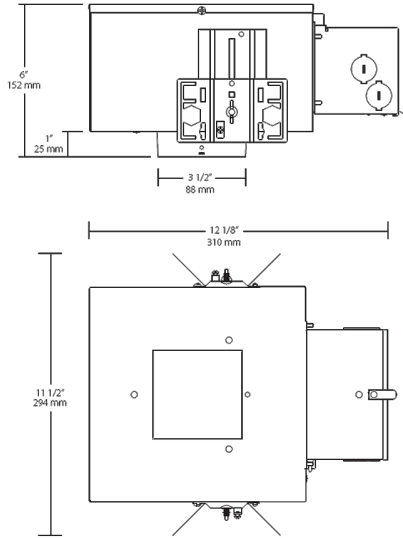
Recovery Act (ARRA) Compliant:

This product complies with the 52.225-21 "Required Use of American Iron, Steel, and Manufactured Goods-- Buy American Act-- Construction Materials (October 2010).

GSA Schedule:

Suitable in accordance with FAR Subpart 25.4.

Dimensions



Features

- 3-in-1 housing accommodates downlight, adjustable or wall washer
- Universal driver supports TRIAC, ELV and 0-10 dimming
- IC-rated, Certified Air Tight
- 100,000 hour LED lifespan
- 5-year no-compromise warranty

Ordering Matrix

| Family | Size | Shape | Wattage | Driver | Color Temp | CRI | Trim | Installation |
|---------|--------|------------|----------------------|---|---|-------------------------------|--|---|
| NDICLED | 3 | S | 25 | L | YY | | TL | |
| | 3 = 3" | S = Square | 25 = 25W 15 = 15W | D = TRIAC, ELV, 0-10V Dimming L = Lutron | N = 4000K (Neutral) YN = 3500K (Warm Neutral) Y = 3000K (Warm) YY = 2700K (Residential Warm) | Blank = 80 CRI HC = 90 CRI | Blank = Accepts cones with trim TL = Accepts trimless cones (spackle flange included) | Blank = Standard CP = Chicago Plenum |