



Available in four configurations, RAB in-line connectors enable RAB fixtures to be mounted to an assortment of RAB arms. Connectors come in black, white and bronze to match RAB fixtures.

Color: Black

Weight: 0.2 lbs

Project:

Type:

Prepared By:

Date:

**Technical Specifications**

**Electrical**

**Connector:**

Inline nipple connector at 180° 1/2" NPS. Use to connect RAB fixtures to RAB arms for added versatility.

**Construction**

**Material:**

Precision die cast aluminum.

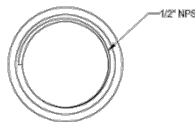
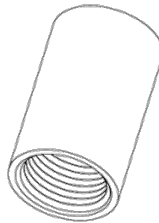
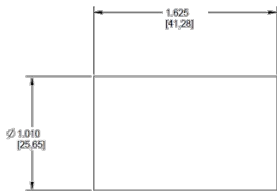
**Hardware:**

Stainless Steel screws

**Finish:**

Our environmentally friendly polyester powder coatings are formulated for high-durability and long-lasting color, and contains no VOC or toxic heavy metals.

**Dimensions**



**Features**

Provides a splice box that matches RAB bronze, black or white fixtures  
Use to connect RAB fixtures to RAB arms for added versatility